

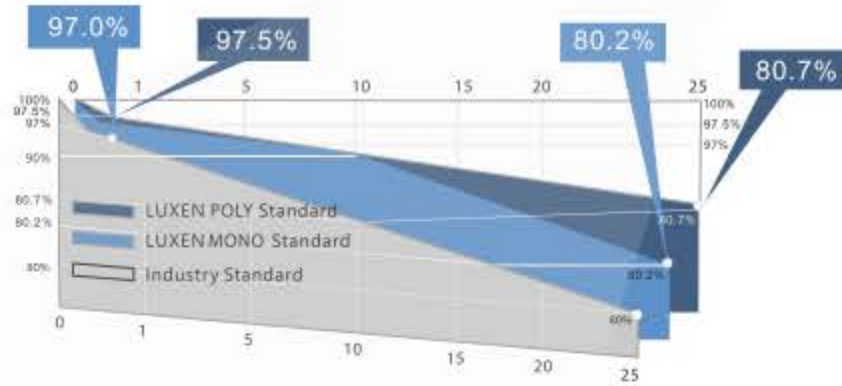
# LUXMAX<sup>®</sup> Plus ALL BLACK

LUXMAX<sup>®</sup> Plus series superhigh efficiency modules adopt advanced PERC technology (Passivated Emitter Rear Contact technology). Its higher conversion efficiency and better anti-PID performance bring installers the maximize power yield per unit area. They can meet your very strict requirement on quality and efficiency of modules.

60 cells  
Bigger PERC Cell



## LINEAR PERFORMANCE WARRANTY



ISO9001:2015 management systems



IEC61215 & IEC61730 standard quality



Smaller electric current, less CTM loss  
Lower risk of hot spot



Wind load up to 3800Pa  
Snow load up to 5400Pa



0-5W positive power sorting



Stable performance under weak light conditions



25-year power warranty  
10-year product warranty



LUXEN

### MONO

#### STC

	LNSE-305M	LNSE-310M	LNSE-315M	LNSE-320M	LNSE-325M
Maximum Power (P <sub>max</sub> )	305W	310W	315W	320W	325W
Open Circuit Voltage (V <sub>oc</sub> )	39.48V	39.80V	40.12V	40.43V	40.74V
Short Circuit Current (I <sub>sc</sub> )	9.98A	10.05A	10.12A	10.19A	10.26A
Voltage at Maximum Power (V <sub>mpp</sub> )	32.28V	32.56V	32.85V	33.13V	33.40V
Current at Maximum Power (I <sub>mpp</sub> )	9.45A	9.52A	9.59A	9.66A	9.73A
Module Efficiency (%)	18.47%	18.77%	19.08%	19.38%	19.68%

### POLY

#### STC

	LNSE-275P	LNSE-280P	LNSE-285P	LNSE-290P	LNSE-295P
Maximum Power (P <sub>max</sub> )	275W	280W	285W	290W	295W
Open Circuit Voltage (V <sub>oc</sub> )	38.27V	39.57V	38.84V	39.14V	39.41V
Short Circuit Current (I <sub>sc</sub> )	9.37A	9.45A	9.54A	9.62A	9.71A
Voltage at Maximum Power (V <sub>mpp</sub> )	30.88V	31.15V	31.39V	31.66V	31.90V
Current at Maximum Power (I <sub>mpp</sub> )	8.91A	8.99A	9.08A	9.16A	9.25A
Module Efficiency (%)	16.65%	16.96%	17.26%	17.56%	17.86%

### Packing Configuration

	20'GP	40'GP
Container		
Pieces per pallet	30	30
Pallets per container	12	28
Pieces per container	360	840

### Mechanical Characteristics

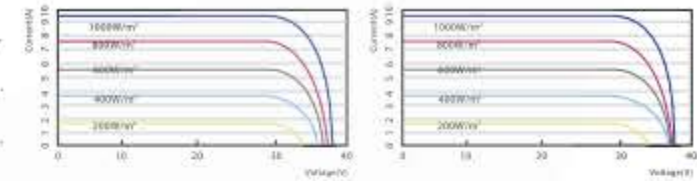
Solar Cell	Mono/Poly
No. of Cells	60(6×10)
Dimensions	1658x996x35mm
Weight	19.5 kgs
Front	Glass 3.2mm tempered glass
Frame	Anodized aluminium alloy
Junction Box	IP67/IP68 rated(3 by pass diodes)
Output Cables	4.0mm <sup>2</sup> , symmetrical length (-)900mm and (+)900mm
Connectors	MC4 compatible
Mechanical load test	5400Pa

ALL BLACK  
60 cells

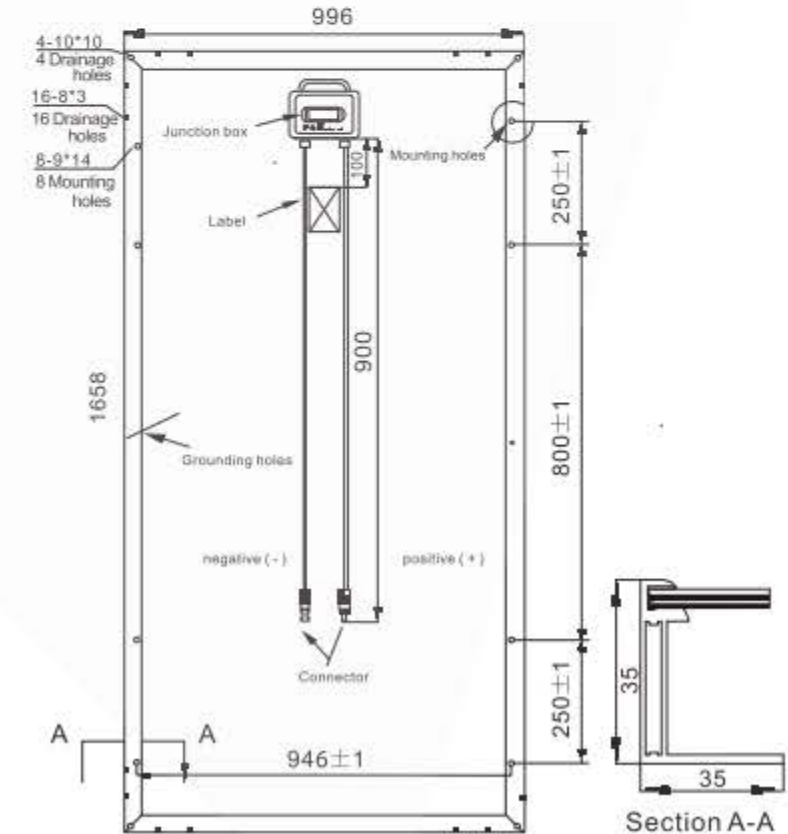
LUXEN

LNSE-275P/I-V

LNSE-310M/I-V



Operating Module Temperature	-40°C to +85°C
Maximum System Voltage	1500V DC(IEC) 1000V DC(UL)
Maximum Series Fuse Rating	20A
Power Tolerance	0/+5W
<b>Temperature Characteristics</b>	
Nominal Operating Cell Temperature (Noct)	45±2°C
Temperature Coefficient of P <sub>max</sub>	-0.36%/°C
Temperature Coefficient of V <sub>oc</sub>	-0.29%/°C
Temperature Coefficient of I <sub>sc</sub>	0.05%/°C



LUXEN SOLAR ENERGY CO., LTD  
T:+86 512 6708 1572  
F:+86 512 6708 1570  
sales@luxensolar.com  
www.luxensolar.com

